

CASE STUDY

WordFlight Empowers Middle Schoolers to Achieve Over a Year of Reading Growth



Humboldt Community
School District





**Humboldt Community School District
Humboldt, Iowa**

Meet the Teacher: Jennifer Savery

- **Middle and high school Spanish and English teacher**
- **+30 years of teaching experience**
- **Oversees middle school MTSS program**
- **WordFlight user for 3 years**

THE CHALLENGE

Humboldt Community School District (HCSD) is a rural district in northeastern Iowa with a growing population and an even faster growing Spanish-speaking community. Despite scoring just above the state average in English Language Arts on the Iowa Statewide Assessment of Student Progress (ISASP), Humboldt Middle School continues to have students who place in tier 2 or 3 because they lack foundational reading skills.

THE SOLUTION

Like many educators, Jennifer Savery fills multiple roles, including overseeing the grades 5-8 Multi-Tiered System of Supports (MTSS). HCSD first began using WordFlight in the 2022-2023 school year for middle school students who were not yet proficient readers. Jennifer appreciated that WordFlight is a literacy intervention created for adolescents.

“Secondary-level teachers, they’re great teachers, but we weren’t trained in strategies to help students with phonics and fluency. When students come to us without those skills, we don’t know how to help them,” says Jennifer. “With WordFlight, you have the system, the support, and the resources to make a difference in students’ reading growth.”

THE IMPLEMENTATION

ASSESSMENT

Every year Jennifer continues to fine-tune how they use WordFlight. For example, when she noticed that WordFlight picked up gaps the Formative Assessment System for Teachers (FAST), or FastBridge Reading Assessment, didn’t identify, she changed their assessment practices.



“The WordFlight Screener is a lot more sensitive than the FAST screener,” says Jennifer.

The WordFlight Screener is more sensitive because it is designed differently from other tests. It is based on the only patented assessment of automatic word recognition skills—the best but often overlooked predictor of fluency.

The WordFlight Screener identifies students who are lacking critical foundational reading skills like:

- Decoding
- Automatic word recognition

INSTRUCTION

If students flag as “high risk” or “some risk” on the WordFlight Screener, or if they are at the low end of the proficiency margin, then they take the WordFlight Diagnostic to see if WordFlight would be a good fit for their needs. If it is, the students are then placed in a WordFlight intervention group.

These students use WordFlight for 20 minutes four times a week while other students are also working independently on other intervention or enrichment projects.

After using WordFlight for three years, Jennifer saw just how important it is for the students to get dedicated instructional time in WordFlight to make progress. So, Jennifer and her colleagues worked with leadership to move their 20-minute intervention window

to a protected time slot in the schedule. This meant that students won’t lose intervention time because of lessons, testing, or other disruptions.

She says: “Our goal is for students to spend at least 80 minutes a week on WordFlight.”

When working with students at the end of the year to get caught up, Jennifer also saw that celebrating progress in WordFlight made a difference in student engagement. She says, “I would tell them, ‘Wow! Look at how far you have come! You used to have a lot of gaps in your reading and struggled. Now look at you!’”

When the students caught on to their progress, it led to rewarding moments for Jennifer in the hallway.

“They were just so cute. They would see me in school and run up and be like ‘I got to this level,’” says Jennifer. “The students were so excited that they just couldn’t wait to talk to me and explain how far they got in WordFlight.”

WordFlight Completion and 2024 Spring Test Scores

WordFlight Units Completed	FAST A Reading Points Gained	ISASP Points Gained
6-11 units	2.8 points	20.2
12-17 units	7.5 points	17
18-23 units	5.5 points	20.9
Full Instructional Program	10.8 points	36.1
<i>Expected Yearly Growth</i>	<i>5-10 points</i>	<i>21-25 points</i>

THE RESULTS

Every year HCSD has used WordFlight, they saw gains in reading proficiency and fluency for middle school students. After fine-tuning their approach for three years, Jennifer reports significant gains when students completed the full WordFlight Instructional Program.

+1 YEAR GROWTH

2023-2024 SCHOOL YEAR FAST ASSESSMENTS

Students who completed the WordFlight Instructional Program averaged **+1 year growth** on the FAST A reading assessment. *n=104*

+1.5 YEAR GROWTH

IOWA STATEWIDE ASSESSMENT OF STUDENT PROGRESS (ISASP)

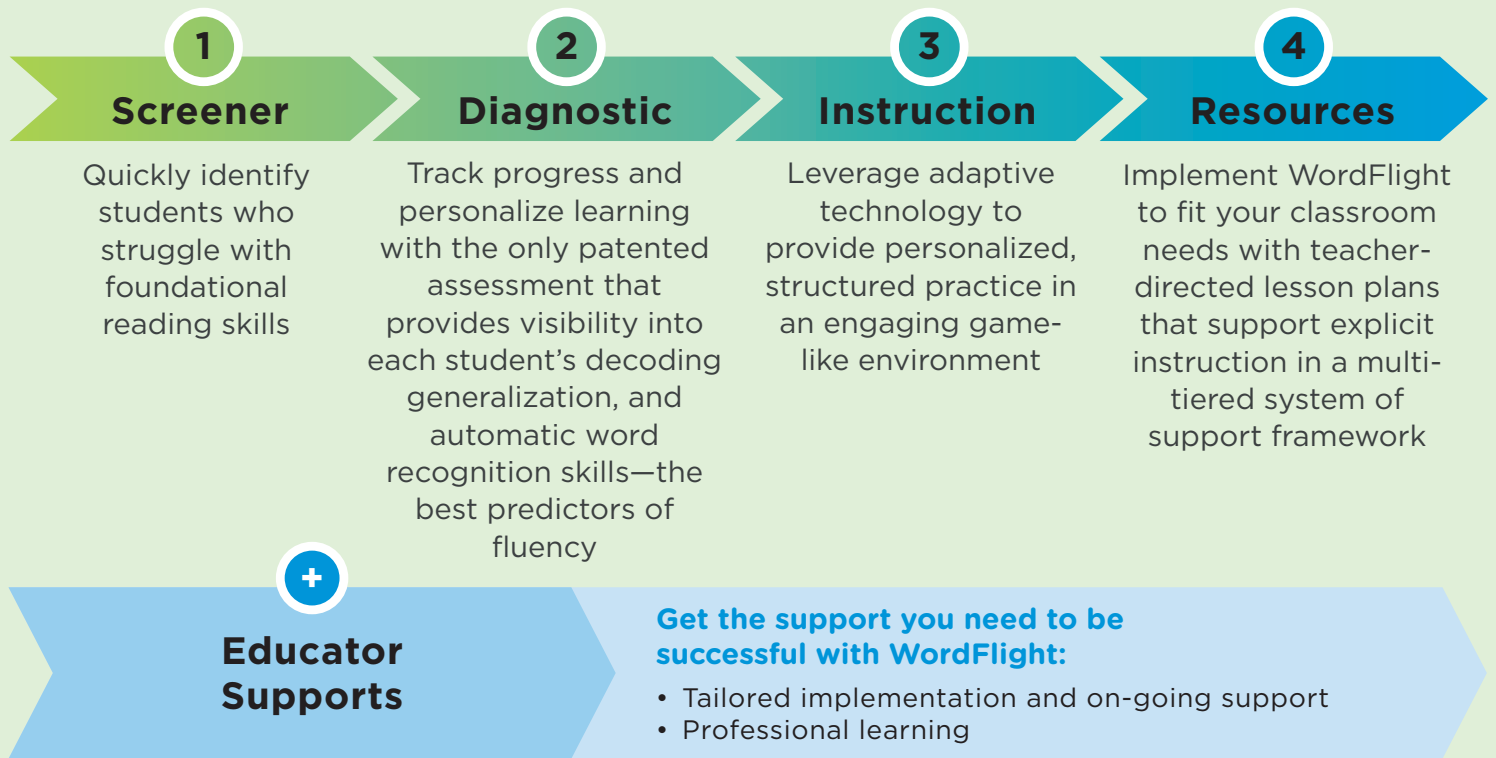
Students who completed the WordFlight Instructional Program averaged **+1.5 years growth** on the ISASP test. *n=103*



WordFlight takes a new approach to helping students achieve reading fluency and build their confidence in reading

WordFlight bridges the gap between phonics and fluency using a unique design powered by the science of learning and the science of reading.

HOW WORDFLIGHT WORKS:



WordFlight is the only literacy solution with a patented diagnostic and instructional program proven to help middle schoolers become proficient in the foundational reading skills they need to reach fluency in just one year.

Get in touch to see how WordFlight can help your students.

For more information, please visit wordflight.com,
email info@wordflight.com or call (888) 701-3009



From WordFlight to Fluency

